

# RFM

## THE MIDLANDS MART

— RUGBYFARMERSMART.COM —

The Charolais Pavilion, Avenue M, Stoneleigh Park,  
Kenilworth, Warwickshire CV8 2RG  
02476 697731 | [www.rugbyfarmersmart.com](http://www.rugbyfarmersmart.com) | 43/139/8013  
Office hours: Monday to Friday - 9.00am - 5.00pm  
Opening Time: Gates open at 5.30am until further notice

## MARKET REPORT FOR MONDAY 1ST JANUARY 2024

### MARKET AT A GLANCE

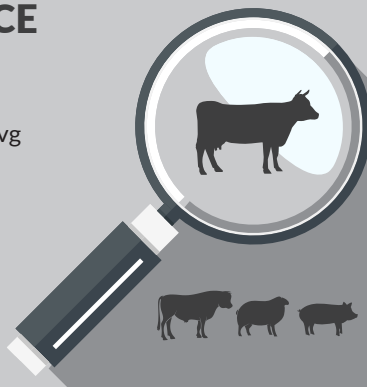
RFM 28th December

Prime Lambs SQQ 313p/kg (2021 Avg  
£135)

Prime Lambs to 406p/pk & £180

Ewes to £212 (878 Avg £103)

Calves to £320 (7)



THURSDAY 18th JANUARY  
SALE OF STORE CATTLE & STORE LAMBS  
PLUS IN LAMB EWES

Catalogues & Entry Forms available by post, email or on the website  
[www.rugbyfarmersmart.com](http://www.rugbyfarmersmart.com) | [admin@rugbyfarmersmart.com](mailto:admin@rugbyfarmersmart.com)

## CATTLE: 79 FORWARD



Steers: 24  
Heifers: 47  
Bulls: 5  
Cows: 3

A nice show of Cattle today for a Bank Holiday. Top in the Steers ppk went to David Leedham with a Limousin weighing 608 kilo and 350ppk.

In the lump this went to RF & JA Nichols with a Charolais weighing 822kilo and totaling £2425

In the Heifers once again it was David Leedham with a superb British Blue weighing 608 kilo and making once again 350ppk, our very own Pete Jarrom also with a Blue making 350ppk  
In the lump this went to once again RF & JA Nichols with a lovely Charolais Heifer making £2490

A small entry of Cows topping at 164ppk

*More Cattle needed each week to fulfill demand*

**Auctioneer : Emma Coupland**

**PLEASE COULD ALL VENDORS BOOK IN STOCK,  
EITHER BY A QUICK CALL, TEXT OR EMAIL THANK YOU!**

Office: 02476697731 | Email: [admin@rugbyfarmersmart.com](mailto:admin@rugbyfarmersmart.com) | Tom: 07774723758

## STEERS & BULLS

Top prices per Head				FA
Charolais x	822kg	£2425	RF & JA Nichols	Y
British Blue	756kg	£2238	AA Fyfe & Sons	Y
Charolais x	724kg	£2172	RF & JA Nichols	Y
Limousin x	608kg	£2128	D M Leedham	Y
Simmental	714kg	£2106	RW & HER Trivett	Y

Top prices per Kilo				
Limousin x	608kg	350ppk	D M Leedham	Y
Limousin x	600kg	311ppk	AA Fyfe & Sons	Y
Charolais x	724kg	300ppk	RF & JA Nichols	Y
British Blue	756kg	296ppk	AA Fyfe & Sons	
Charolais x	822kg	295ppk	RF & JA Nichols	Y

## HEIFERS

Top prices per head				FA
Charolais x	778kg	£2490	RF & JA Nichols	Y
British Blue	564kg	£1974	P M Jarrom	Y
Limousin	688kg	£1961	DTP & PA Walters	Y
British Blue	724kg	£1948	DJ Hull & Partners	Y
Angus	656kg	£1935	DJ Hull & Partners	Y
Top prices per kilo				
British Blue	534kg	350ppk	D M Leedham	Y
British Blue	564kg	350ppk	P M Jarrom	Y
Charolais x	778kg	320ppk	RF & JA Nichols	Y
Limousin	578kg	308ppk	TI & GM Edmunds	Y
Limousin	572kg	308ppk	TI & GM Edmunds	

## Len Eadon 1999-2022 Tribute page

<https://leneadon.muchloved.com/?fbclid=IwAR1QM9qsvxqscmyehDUwuJvjrbR4KICliDqyezwbDYBEAsDaB164bZn50g4>

## COWS

Top prices per head Cows				FA
Hereford	818kg	£1342	Woods Farm	Y
Angus	802kg	£1291	Woods Farm	Y
Angus	676kg	£906	JS & N Morley	Y
Top prices per kilo				
Hereford	818kg	164ppk	Woods Farm	Y
Angus	802kg	161ppk	Woods Farm	Y
Angus	676kg	134ppk	JS & N Morley	Y

## PRIME LAMBS: 2021 FORWARD SQQ 313 P/KG AVG £135



Christmas Week;

A Christmas Sale full of Cheer that saw 2200 Lambs Sold for the Christmas Sale. Less Buyers about as the Butchers enjoyed a well earned rest, the Export Boys though in fine song. A super yard of meat well enjoyed racing to a massive 313p/kg SQQ and £137Avg well surpassing the unbelievable trading that had been conducted nationally that Morning. Buyers with large orders to fill and very little time to do it. Meat throughout and very much appreciated. Best end on fire and Export Lambs beating the magical £4 mark at 406p/kg going to the unstoppable D W Gurney & Son whom also sold 40kg to 377p/kg and 370p/kg. Leam Farm Partners Shorn 40kg to 370p/kg with Matt Morris and Messrs Gurney passing 350p/kg on numerous occasions. Meated Lambs regularly 310p/kg plus with Mule cross 290 to 320p/kg throughout. Weight a fast trade selling to 358p/kg at 48kg for C R Hill, Leicester with M & C Morris 46kg at 354p/kg and Gurneys 47kg at 347p/kg and 50kg at 340p/kg. Meat Lambs 280p/kg throughout as long as fully finished and clean bellied.

A Massive avg with Export lambs to 43kg at £152 for Leam Farms with sheared Beltex and 45kg belly clipped lambs at £149 for Humphrey Livestock whilst other Clipped Lambs from Hull Farms saw 43kg at £149. Messrs Gurney with 40 to 43kg regularly £140 plus. Weight in fashion topping at £180 at 62kg for overnight Lambs from Amorise Farms at 62kg with Matt Morris 52kg at £180 and BJ & IS Wain 53kg to £173 and CR Hill 48kg to £172. £170 for Messrs Morris, Amorise and Hill and oceans over £160. Supply and Demand simple as that.

LAMBS MUST NOW BE BELLY CLIPPED TO AVOID DETENTION AT POSTMORTEM!!!!

Auctioneer: Thomas Wrench

## DIRTY CRUTCHES & BELLIES ARE NOT ALLOWED OVER THE WEIGHBRIDGE

## PRIME LAMBS SQQ 313 p/kg

### Per Kilo **under 45.5kg**

Char	32.00kg	406ppk	DW Gurney & Son
Beltex	35.00kg	377ppk	DW Gurney & Son
Beltex	40.00kg	370ppk	DW Gurney & Son
Beltex	38.00kg	368ppk	DW Gurney & Son
Beltex	34.00kg	365ppk	Leam Farm Partnership

### Per HEAD

Texel	43.00kg	£152.00	:Leam Farm Partnership
Texel	45.00kg	£149.00	Humphrey Livestock
Beltex	43.00kg	£149.00	M & C Morris
Beltex	41.50kg	£148.00	D W Gurney & Son
Beltex	40.00kg	£148.00	D W Gurney & Son

### Per Kilo **over 45.5kg**

Beltex	48.00kg	358ppk	C R Hill
Beltex	46.00kg	354ppk	M & C Morris
Char	47.00kg	347ppk	D W Gurney & Son
Beltex	52.00kg	346ppk	M & C Morris
Texel	50.00kg	340ppk	Amorise Farms Ltd

### Per HEAD

Texel	62.00kg	£180.00	Amorise Farms Ltd
Beltex	52.00kg	£180.00	M & C Morris
Beltex	53.00kg	£173.00	BJ & IS Wain
Beltex	48.00kg	£172.00	C R Hill
Texel	50.00kg	£170.00	Amorise Farms Ltd

**\*\*FAT CATTLE TIMINGS\*\***  
**COWS 8:30AM**  
**PRIME CATTLE 9AM**

Sunday lairage is now open from 9am-3:00pm  
 Gates close 3:00pm **STRICTLY.**

## CULL EWES : FORWARD



A much swifter trade topping at £212 and £195 for Messrs Fyfe. Texels £170 plus. First cross £130 plus. Suffolks to £151 for David Wadland and £141. Suffolks' generally £130 mark. Mules to £123 for Messers Glover and generally £100 mark.

**PLEASE SEE THE WELFARE STATEMENT BELOW REGARDING THE CULL EWES**

*Auctioneer: Thomas Wrench*

### EWES

Texel	£212	J & N Fyfe	Beltex	£192	DW Gurney & Son
Texel	£195	J & N Fyfe	Texel	£170	Passmore Brothers
Texel	£194	BJ & IS Wain	Texel	£170	DW Gurney & Son

## WELFARE STATEMENT

Following a meeting with Warwickshire Trading Standards & the FSA on Monday we have been asked to highlight the Welfare Issues being reported from the Abattoirs regarding Cull Ewes. These mainly relate to MASTITIS & LAMENESS. Condition Score i.e being very thin.

Please remember that an animal must be fit for the intended journey, it should not be ill, injured or severely lame i.e. must be full weight bearing.

These sheep are being rejected at abattoirs around the Country

## STORE LAMBS: 28 FORWARD



Store Lambs : 28 Forward

A very small entry for this extra sale for many slaughter sheep but a handful of Stores that didn't make the grade were sold

Topped at £115 for Steve Leedham.... Other good prices for Woody and Simon Bailey

***Next sale Monday 8th January***

***Auctioneer: Tim Webster***

### FOR SALE

FOR SALE-BORDER COLLIE PUPPIES.

Both working parents registered.

Tel Graeme 07891 677468

### HELP REQUIRED

DUE TO RETIREMENT WE HAVE A VACANCY  
FOR A PERSON WITH EXPERIENCE IN  
LAMBING AND ARABLE OPERATIONS IN  
SOUTH NORTHANTS.

FURTHER DETAILS ON REQUEST  
ROBERT DAVY 07762164552



### AUTO GATES LTD

Bridge Farm, Holt Lane, Ashby Magna, LE17 5NJ

Trevor 07498993897/01455 202791

Email: [tjautogate@gmail.com](mailto:tjautogate@gmail.com)

Fitted to new or existing gates, wood or steel automated.

Sliding, swinging or cantilever.

## CALVES



### Baby Calves : 7 Forward

We held an extra sale today for any farmers who Calves would go over 42 days until our next sale on the 8th January

The sale was supported by Phil Dyson and Peter Hemmings both selling good quality Limousin Calves

Phil Dyson sold 2 Bull Calves £282 & £320

Peter Hemmings 1 Heifer £270 and 4 Bulls £240 to £300

As mentioned earlier our next sale is on Monday 8th January 2024

Limousin Bulls. £240 to £320

Limousin Hfrs. to £270

***Auctioneer: Tim Webster***

### ROBERT WOODFORD

IT IS WITH GREAT SADNESS WE REPORT THE PASSING OF ROBERT WOODFORD  
OF CHURCH LAWFORD WHO PASSED AWAY SUDDENLY 2ND DECEMBER  
HIS FUNERAL IS TO TAKE PLACE 4TH JANUARY AT 1PM ST PETERS CHURCH,  
CHURCH LAWFORD  
CONTACT DETAILS 07531251359  
DONATIONS TO THE AIR AMBULANCE





## **BOSWORTH MARINA**

### **Market Bosworth**

### **Marina Manager**

Bosworth Marina is looking for a Marina Manager to help run and promote our 150 berth marina on the Ashby Canal. Basic knowledge of utilities and good computer skills are required.

Cottage may be available.

### **Maintenance Manager**

We also require an enthusiastic person to maintain our 19 acre marina site to the highest standard, including the facilities, landscaping and boating areas.

Cottage may be available.

For further details contact Ben at [bwtrivett@gmail.com](mailto:bwtrivett@gmail.com) or Josh at 07970457616

## **FOR SALE COLLIE PUPS**

Ready 27/12/23 but happy to keep until the new year.

Parents are exceptional workers with both cattle & sheep. They have wonderful temperament very obedient so very easy to train. (mum is sable & dad is tri colour) Other members of the family can be seen. Very faithful so they are destined to be best workers you can find, whilst doubling as the best friend you can find.

Lynne Smith: 07759454195  
Good home top priority please

## **FOR SALE**

LAMB CREEP FEEDER  
APPROX. 4FT X 5 1/2 FT

M LEE  
01788 570651



*Your local, independent fuel supplier*



Heating Oil



Gas Oil  
& Diesel



Lubricants  
& Additives



Superheat  
35



Fuel Tanks



AdBlue®



[www.rix.co.uk](http://www.rix.co.uk)



01675 419187

2018  
**Gold  
Trusted  
Service**  
★★★★★  
feefo



SALES / LETTINGS / COMMERCIAL / FARM & RURAL  
PLANNING & DEVELOPMENT / AUCTIONS  
[howkinsandharrison.co.uk](http://howkinsandharrison.co.uk)

HOWKINS  
HARRISON



## THE 91st MIDSHIRES PRODUCE AUCTION.

Approx 5,000 Tonnes on Farms and Estates in the Central Midland Counties.

To include a comprehensive selection of HAY, STRAW, HAYLAGE & SILAGE.  
in all sizes, easily accessible to towns including Banbury, Coventry, Daventry, Hinckley,  
Lutterworth, Northampton, Nuneaton, Rugby, and Warwick.

Together with: 200 Round Bales Organic Silage,  
200 Tonnes Maize Silage at Cosby, Leicester,  
200 Tonnes Maize Silage at Sapcote, Leicester,  
200 Tonnes Grass Silage at Rowington, Warwick,  
50 Tonnes Fodder Beet at Anstey, Coventry.

Plus: Hay and Straw for delivery.

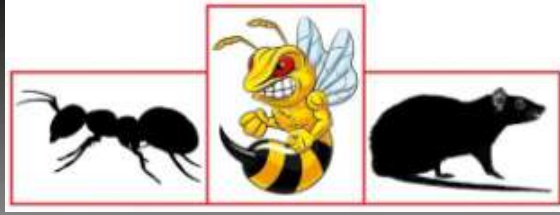
TO BE SOLD BY AUCTION ON

**Tuesday 2nd January 2024 at 2.30pm.**

Lutterworth Rugby Football Club, Ashby Lane, Bitteswell, Lutterworth, Leicestershire LE17 4LW  
(3 Miles from Junction 20 of the M1 Motorway)

TELEPHONE 01788 564746 | 07921 511852  
EMAIL [dispersal.sales@howkinsandharrison.co.uk](mailto:dispersal.sales@howkinsandharrison.co.uk)  
7-11 Albert Street, Rugby. CV21 2RX





# RDB Pest Control

Reliable | Trustworthy | Fast | Effective  
Competitive Prices

**Ryan Brunt**

**07922 091 459**

**[www.rdbpestcontrol.co.uk](http://www.rdbpestcontrol.co.uk)**

## **Why You Should Choose Us**

- ✓ Cater for Red Tractor and Farm Assurance Schemes
- ✓ Wide ranging experience on Farms with existing agricultural customers
- ✓ Member of Warwickshire Young Farmers
- ✓ Fully qualified - Level 2 RSPH in Pest Control
- ✓ Trustworthy and security vetted
- ✓ Prompt, reliable fast response

## **A selection of sites where I have experience:**

Police Sites • Local Airport • Farms • Warehouses • Offices  
• Industrial Estates • Food Premises • Private Houses  
Country Estates • Building Sites • Local Councils • Schools •  
Day Nurseries • Care Homes

Berryfields Farm

## **BERRYSTOCK FEEDS**



**PROVIDING CATTLE  
AND SHEEP FEEDS FOR  
THE MODERN MARKET**



### **Do You Want?**

- HIGH PERFORMANCE
- COST EFFECTIVE
- FULLY ASSURED
- COMPLETE FEEDS
- INTEGRATED FEEDING SYSTEMS

Then contact **BERRYSTOCK FEEDS:**

Tel: 01788 890320 E-Mail: [admin@berryfieldsfarm.co.uk](mailto:admin@berryfieldsfarm.co.uk)

Web: [www.berrystockfeeds.co.uk](http://www.berrystockfeeds.co.uk)

UFAS 350

**DO IT THE BERRYSTOCK WAY**

## **T.A.R HIRE**

### **FOR HIRE:**

**10 & 14 TON REAR MUCK  
SPREADERS**

**12 TON TRAILERS WITH  
SILAGE SIDES**

**ROAD SWEEPER**

**FLAT TRAILERS**

**GRASS TOPPERS**

**CONTRACT MUCK**

**SPREADING SERVICES**

### **CONTACT:**

**DAVENTRY (ROB) - 07801791212**

**HINCKLEY (ALAN) - 07802951179**




# Farm insurance, the way it should be

We're a family-run business and pride ourselves on forging long term relationships with our farming and agricultural clients. Covering the Midlands, South West and South East, we deliver an extensive range of farm, agri business and equine policies tailored to you.

Farm & Equine **01865 290915**

General **01865 844998**

 Follow us **@County\_Farm**

[www.county-insurance.co.uk/farms](http://www.county-insurance.co.uk/farms)



Independent Insurance Brokers County Insurance Services Limited. Address and Registered Office: County House, Glyme Court, Langford Lane, Kidlington, Oxon OX5 1LQ. Authorised and regulated by the Financial Conduct Authority (FCA) (FRN: 597267). Company registered in England No. 08411634



# WE COVER SMALL FARMS, LARGE FARMS AND EVERYTHING IN BETWEEN



From sheep farmers to arable farmers.  
Flower growers to poultry farmers.

NFU Mutual is proud to insure over 75% of UK farms with our Farm Select insurance. But we want more farms to benefit from great cover and local service. NFU Mutual has introduced Farm Essentials insurance – designed to meet the needs of smaller farms.

As your local agency, we are close by and can provide expert advice and hands-on support when you need it.

Call **Coventry Office** on **02476 444519**

NFU Mutual, 6 Eastwood Business Village,  
Harry Weston Road, Binley Business Park,  
Coventry, CV3 2UB



**NFU Mutual**  
FARM INSURANCE



**THE MIDLANDS MART**

---

RUGBYFARMERSMART.COM

---

**THURSDAY 18TH JANUARY  
SALE OF STORE CATTLE & STORE LAMBS  
PLUS IN LAMB EWES**

**Vendors who are wishing to sell stock  
please feel free to contact:**

**Tom Wrench** - 07774 723758 Market Manager & Auctioneer

**Tim Webster**- 07437 101163 Auctioneer & Fieldsman

**Emma Coupland**- 07808 271218 Fat Cattle Auctioneer

**Charlie Betteridge**- 07760266701 Fieldsman

**Nathan Shaw**-07460120293 Yard Manager

who will gladly make

**A FREE ON FARM VISIT & VALUATION**



---

**Follow us on social media:**

Facebook & Twitter - @RFMMidlandsMart

Instagram - rugbyfarmersmartltd

# **VET ATTESTATIONS**

## **PREPARE NOW**

Producers selling livestock for slaughter  
will require a Veterinary Attestation from  
13th December 2023



From 13th December 2023, all producers selling livestock for slaughter will require a Veterinary Attestation, or evidence of membership of a qualifying assurance scheme. Producers should prepare now for the changes. Follow the link below to our FAQs for livestock markets and producers to find out more. <https://www.laa.co.uk/news/5126/veterinary-attestations-faqs-for-livestock-markets-and-producers/>